

**PARAGON**



HEALTH INSTITUTE

**CONGRESSIONAL  
HEALTH POLICY  
EDUCATION PROGRAM**

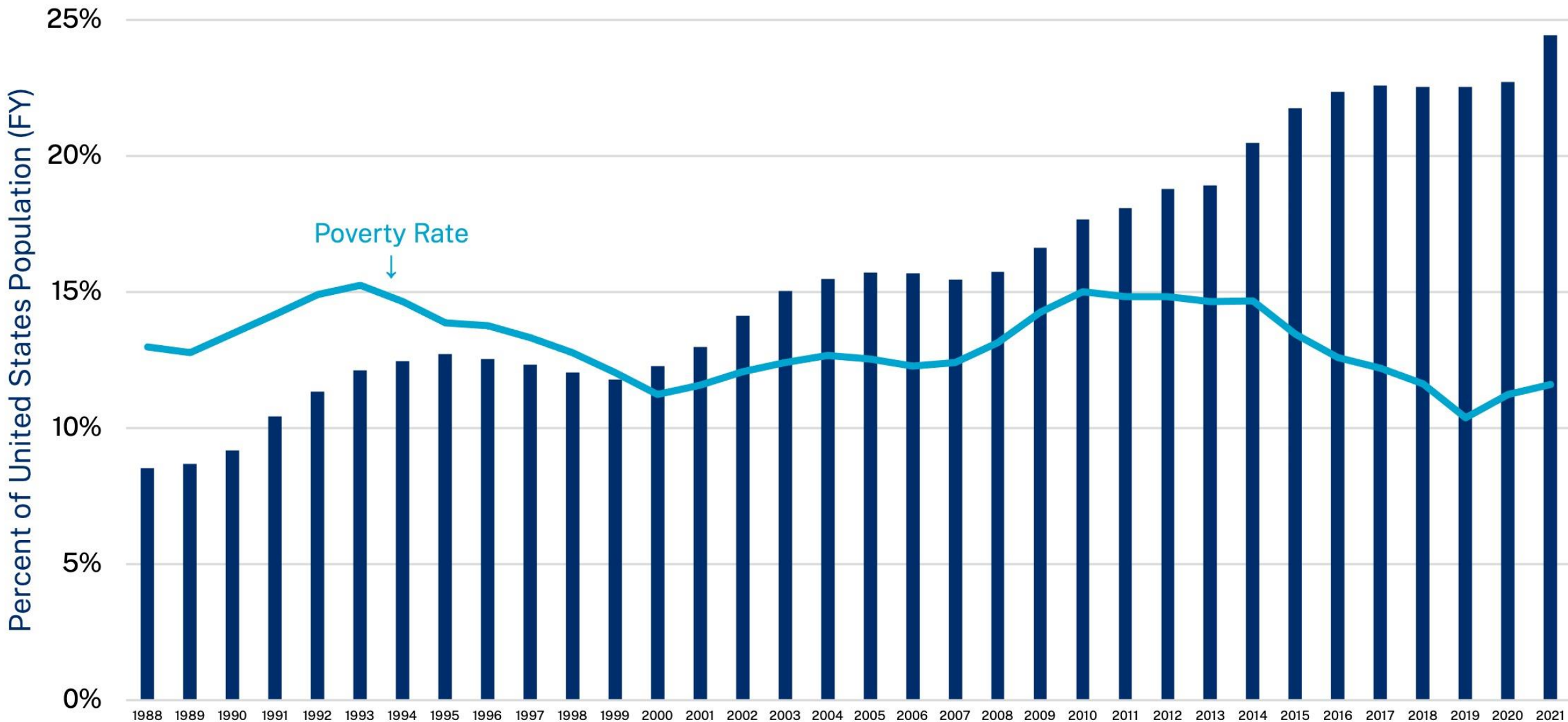
To ask a question

**Text**

**703.527.2734**

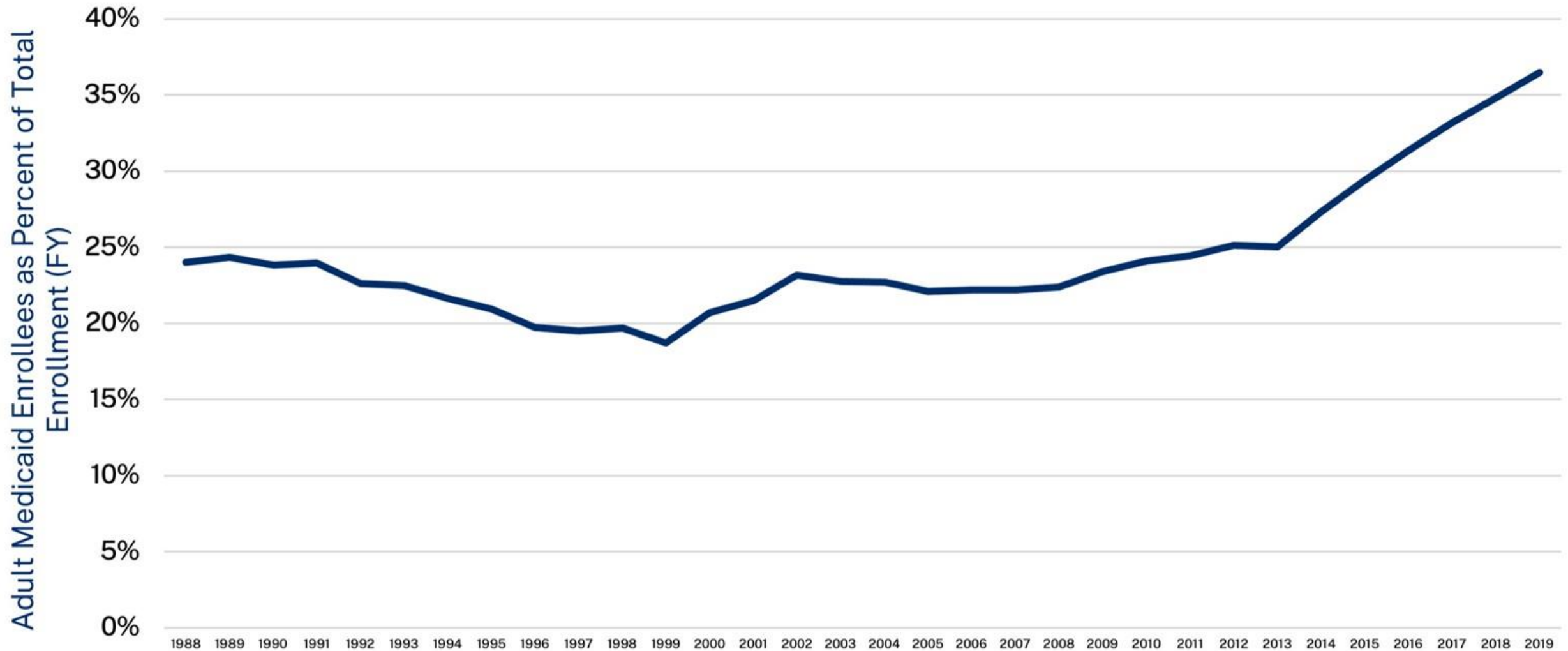
# Medicaid is No Longer for the Poor

Enrollment Has Tripled over Last Three Decades as Enrollees Now Double People in Poverty



Source: MACStats - Medicaid and CHIP Databook 2021 Edition, Census Bureau, Centers for Medicare & Medicaid Services

# Medicaid Enrollment Driven By Growth in Able-Bodied, Working-Age Adults



Source: MACStats

# Diminished Capacity to Finance Medicaid

Now Only Two Workers Support a Medicaid Enrollee — Down from Five Workers Three Decades Ago

1988  
5.1 to 1



2004  
2.9 to 1



2021  
1.9 to 1



# Medicaid Enrollment Projections for Under 65 Population, Per CBO (in millions)

	2021	2022	2023	2024	2025
Population	270	271	270	270	269
Medicaid Enrollment	71	73	71	64	61
Blind & Disabled	8	8	8	7	7
Children	33	34	32	30	28
Adults	30	32	31	28	26
Multiple Coverage*	18	19	17	14	13
Medicaid as % of Population	26%	27%	26%	24%	23%

Source: CBO, "Federal Subsidies for Health Insurance Coverage for People Under 65: 2022 to 2032."

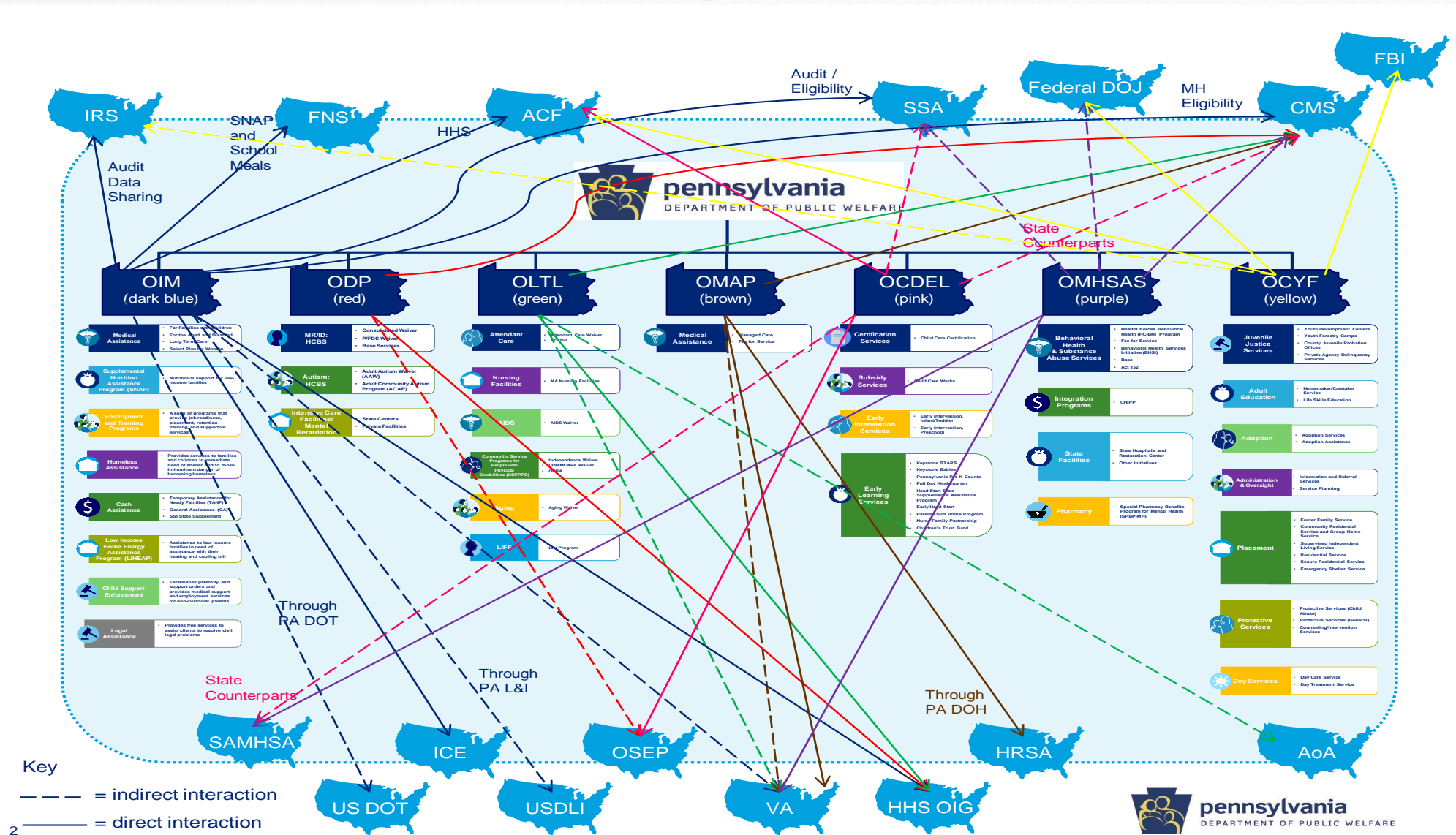
To ask a question

**Text**

**703.527.2734**

# Chaos in the Federal-State Relationship

Below is a snapshot of what a state must deal with from the federal government: a myriad of conflicting rules and regulations from a massively disorganized bureaucracy.





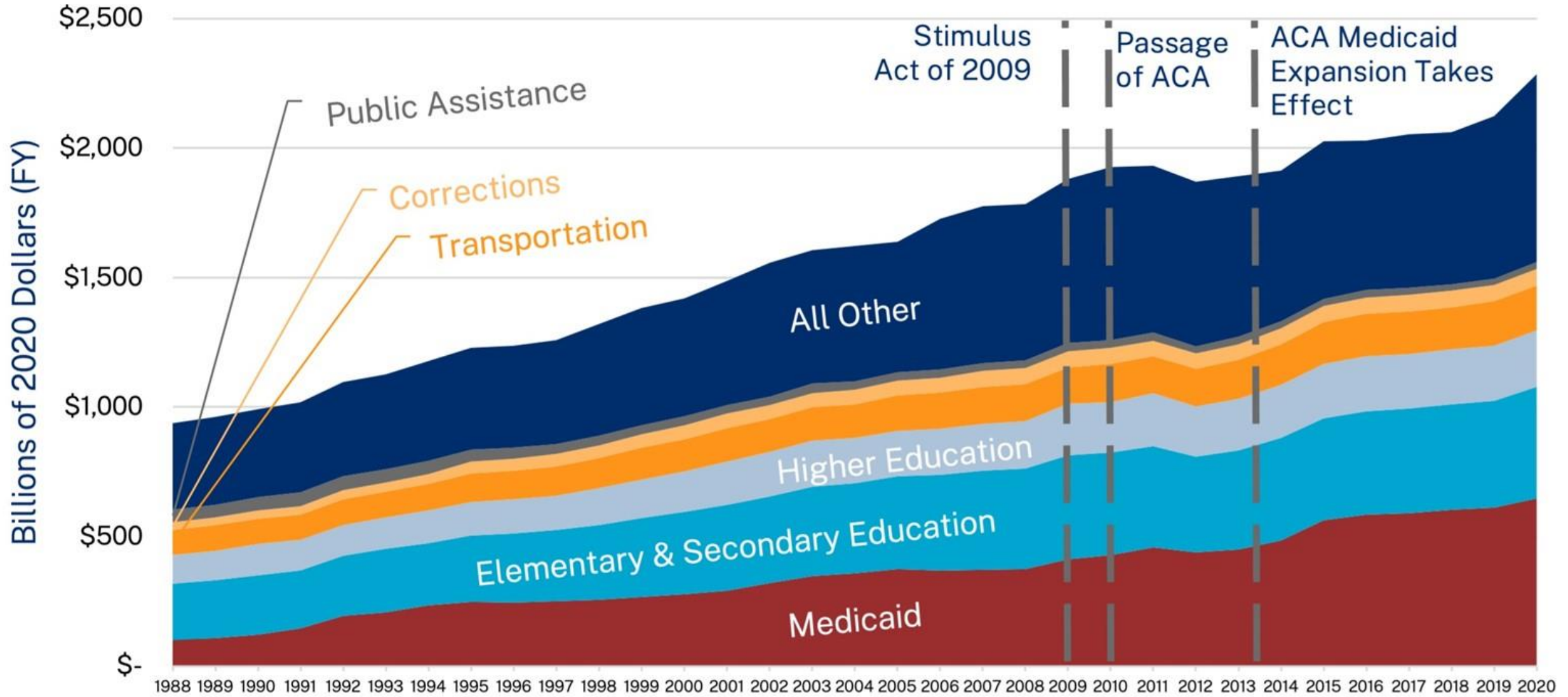
To ask a question

**Text**

**703.527.2734**

# State Spending Explosion Driven by Medicaid

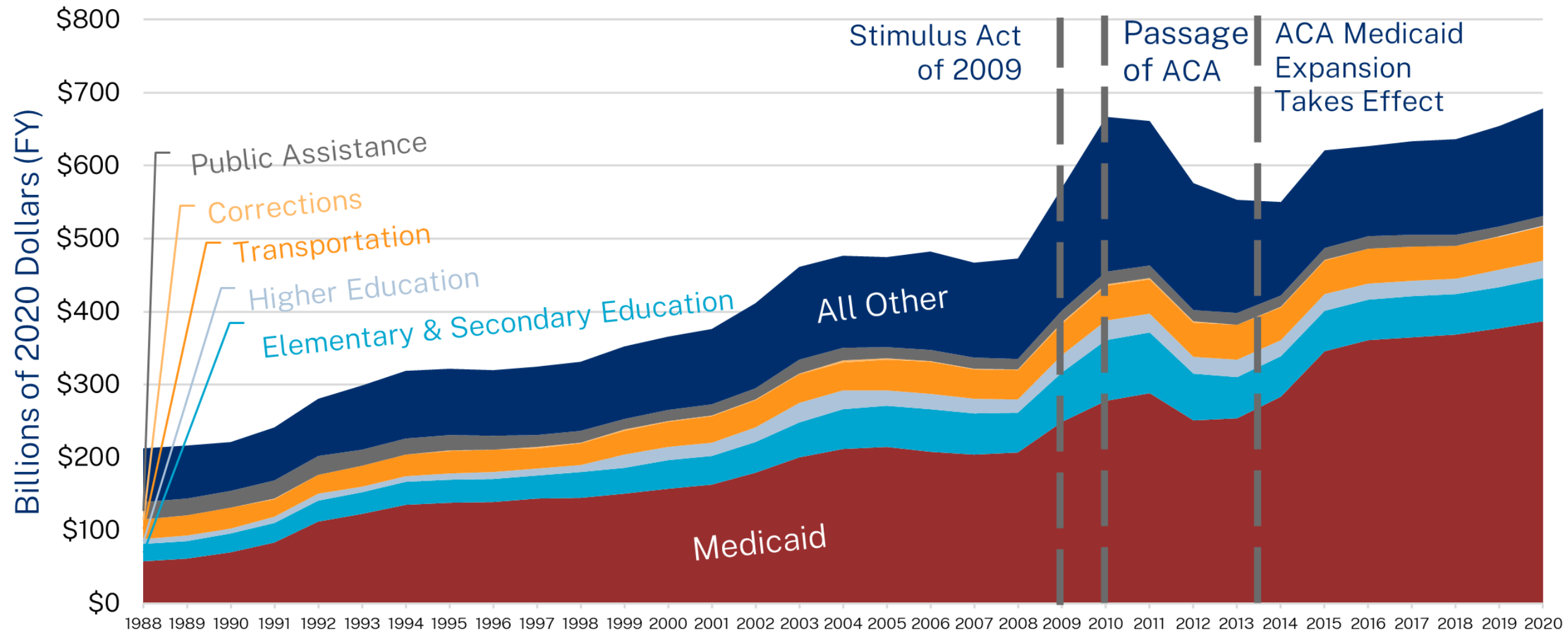
## Real Medicaid Spending Up 500% Over Last Three Decades



Source: National Association of State Budget Officers' Annual Expenditure Report

# An Explosion of Federal Money To States For Medicaid

Federal Funds For Medicaid Are Nearly 7 Times Greater Than Federal Funds For Elementary & Secondary Education



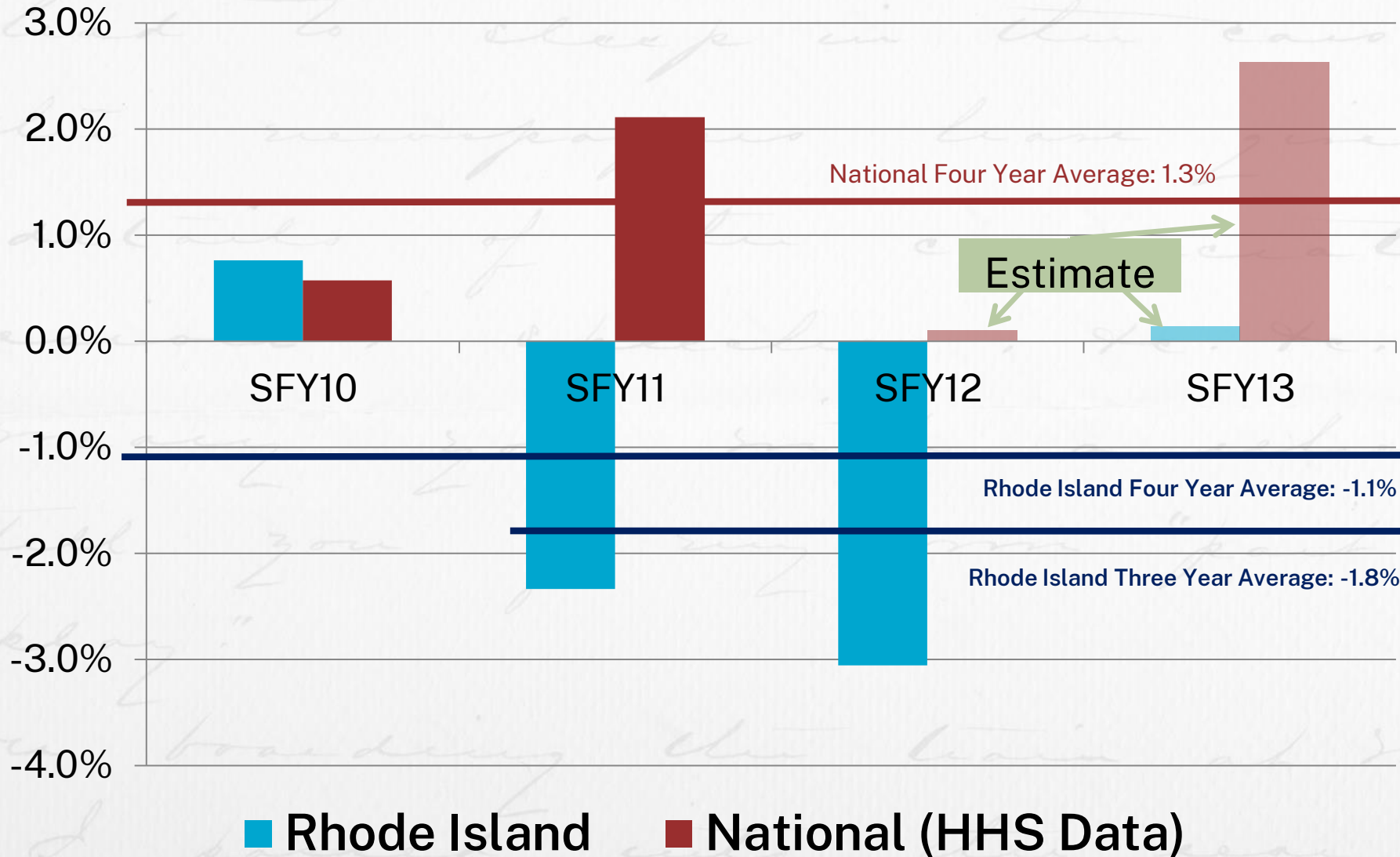
Source: National Association of State Budget Officers' Annual Expenditure Report

To ask a question

Text

703.527.2734

# RI Per-Person Cost Growth was Well Below National Average



# RI Global Waiver Lessons Learned

- Multiple waivers create inefficiencies and poorer outcomes.
- The cap toppled the Medicaid culture of continually increasing spending.
- Bipartisan with a Republican governor and a Democratic legislature.
- While CMS approved the waiver, it also limited its total success. Limit the authority of CMS to reject innovative ideas that don't increase costs.
- Allowing states to keep a portion of savings will incentivize cost containment and innovation.
- Redesigning Medicaid takes dedication and hard work — lots of it.

To ask a question

**Text**

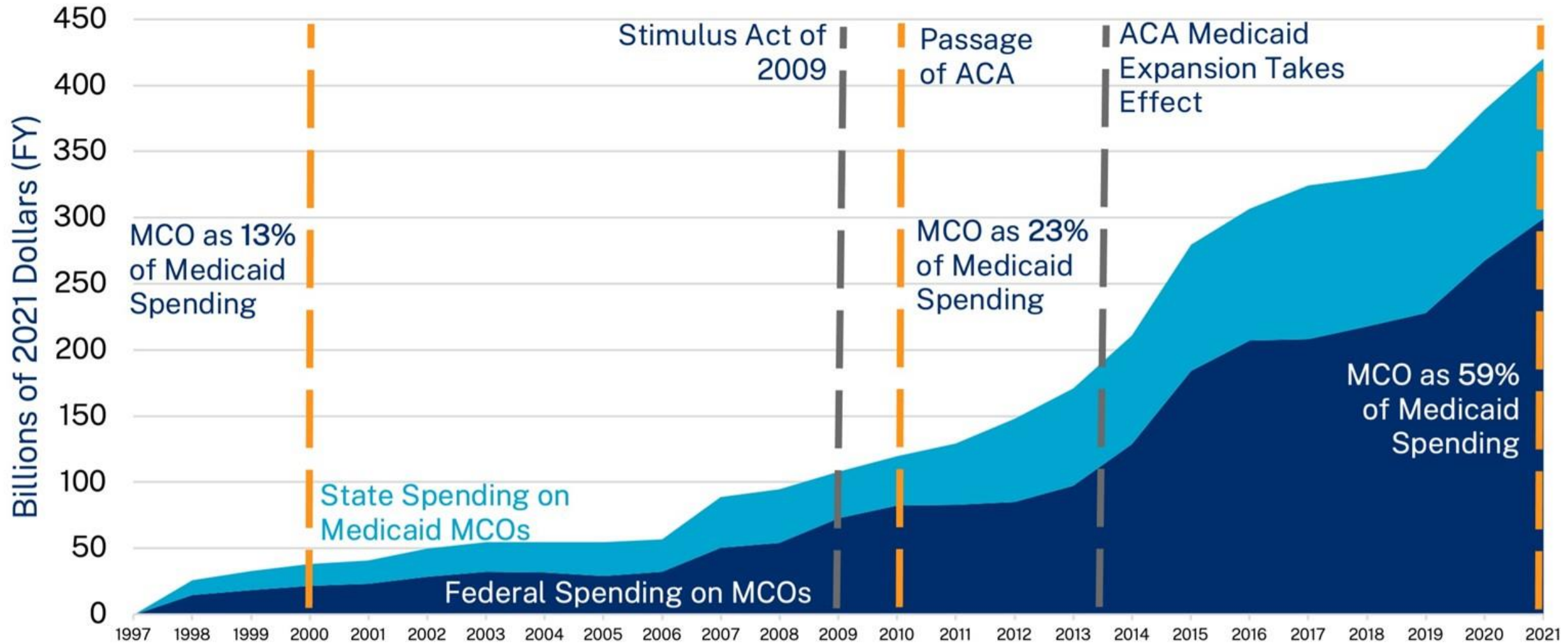
**703.527.2734**

# What do we know about Medicaid expansion?

- Enrollment much greater than expectations
- Per enrollee spending much greater than expectations
- ER use soared
- Improper payments soared
- Medicaid managed care spending soared
- Life expectancy declined, with greater declines in expansion states



# Medicaid Managed Care Organization (MCO) Spending Growth Soared After Affordable Care Act



Note: Includes Prepaid Ambulatory Health Plans and Prepaid Inpatient Health Plans

Source: CMS FMR 1997-2021, Health Management Associates

To ask a question

**Text**

**703.527.2734**

**PARAGON**



HEALTH INSTITUTE

**CONGRESSIONAL  
HEALTH POLICY  
EDUCATION PROGRAM**